

KBB Automatic Swing Door

About automatic swing door

Automatic swing door operator is the product which can provide the solution of making limited entrance with max. opening. It is easy and fast to realize automation of swing door entrance through external hanging or built-in installation.

KBB automatic swing door operators will easily meet the requirement of interior design specification of handicap and fire protection. They are widely used in offices, meeting rooms, hospitals, and workshops' interior and exterior space.



Automatic swing door type:

Power on/off



With spring

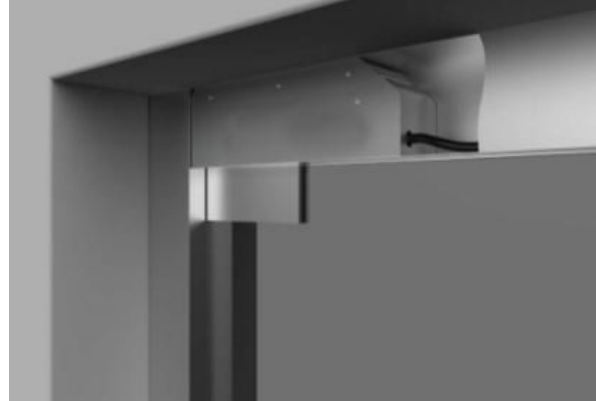


Opening direction could be adjusted.
Wide range for different door weights
External hanging or built-in installation





External hanging



Built-in



KBB Automatic Swing Door Operator:

Door Type	Features	Installation
KS1700/1207F		External hanging
KS1800		concealed
KS1900		External hanging
KS2000		External hanging

KS1700/1207F series automatic swing door operator



KS1700/1207F series is an External hanging, automatic closed swing door operator. In order to strengthen the opening force of the door, it adopts standard articulated arm structure, which could support max 150kg door weight.

Main features:

- Custom setting. Opening directions, opening speed and opening force could be adjusted, through program setting.
- Synchronizing function. By adding synchronizer, we could realize opening & closing speed and time of two operators synchronously.
- It could equipped with an external program controller and process cutting protection, overheating protection and automatic reverse functions.

KS1800 series automatic swing door operator



KS1800 series swing door operator matches flat plug-in, spring-return and supporting arm. Compared with other type, KS1800 could automatically close when power off. Max door weight of 120kg and adjusted by external controller.

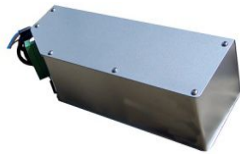
Main features:

- Backup Battery: optional backup battery could provide about 200 times switch, max. six hours using by static. Used as handicapped persons' passage.
- External program controller: by connecting with an external program controller to set the system function, with over cut protection, thermal protection, automatic reverse function.
- Synchronization Function: optional synchronizer, make the two door leaves to keep the same speed and time for open and close, the two operators work together.

Technical Parameters:

Type	1700A	1700(01)/1207F	1700(02)	1800 spring-return
Dimension	534*77*100			480*102*78
Control Programmer	built-in	External hanging		External program controller
Temperature range	-20 to +50°C			-20°C to +50°C degree
Humidity range	Relative humidity<85%			relative humidity<85%
Closing speed	30-60 degree/s			30-60 degree/s
Opening Speed	30-60 degree/s			30-60 degree/s
Max Door Height	100kg	80kgs	100kg	80kgs
Opening Degree	70-90 degree			70-90 degree
Hold open time	0-60s			0-60s

KS1900 series automatic swing door operator

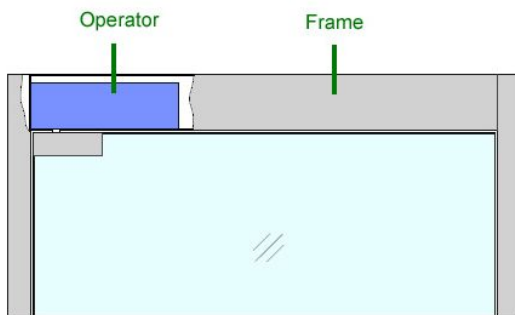


KS1900 is concealed electric-off type swing door operator, adopting hidden floor spring design, the operator can be installed directly inside the door frame or masonry, the door areas are more beautiful. And KS1900 operator can be set by program controller to open inward or outward.

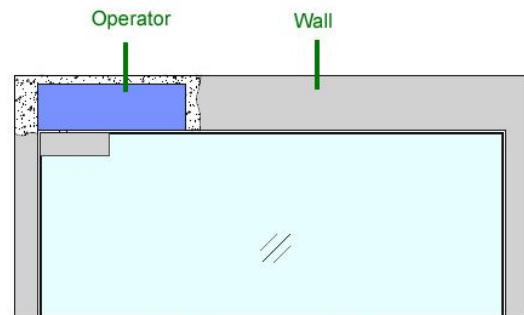
Main features:

- Bi-directional open: a two-way inside and outside open function, opening outward and inward angle is 90 degree.
- Double leaves synchronization: support double leaves synchronization. The door leaves can open or close at the same time, or assist to open and close.
- Frameless doors series: Suitable for all frameless doors and places where surrounding space is limited.

Built-in installation schematic diagram



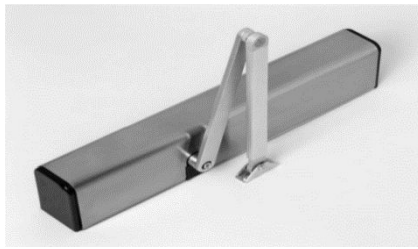
Installation inside of Frame



Installation inside of Wall



KS2000 series swing door operator



KS2000 series swing door operator. It is a newly developed spring closing operator with switch function, spring function, and one key recovery function.

With optimization of the microprocessor calculation, the operator can calculate the best way to control the motion of each door movement path.

Adjustable opening strength of the spring tension when power off ensure the security of end users.


Main features:

- Key switch: Select “full-automatic”, “push and go”, “keep open” without program controller.
- Spring restoration: Maximum door weight up to 100KG, also make the operator life time longer, more durable.
- One key recovery function: according to customer's daily habits, equipped with one key recovery function, supporting one key recovery without power outage when encountering problems, easier operation for end users.

Technical parameter

Model	1900	2000
Dimension	312*103*85	580 X 124 X 84
Program control	External program controller	Key switch (three positions)
temperature range	-20 to +50°C	-20~+50°C
Humidity range	Relative humidity<85%	Relative humidity <85%
Closing speed	30-60 degree/s	30-60 degree/s
Opening speed	30-60 degree/s	30-60 degree/s
Maximum door weight	100kg	100kg
Opening angle	180 degree	70-95 degree
Hold open time	0-60s	5-20

Safety function

Function		KS1700/1207F	KS1800	KS1900	KS2000
	Self-checking	✓	✓	✓	✓
	Synchronization	✓	✓	✓	
	Spring restoration	-	✓	-	✓
	Interlocking	✓	-	-	-
	Push open	✓	-	✓	✓
	Backup battery	-	✓	-	-
	Automatic reverse function	✓	✓	✓	✓
	Overheating protection	✓	✓	✓	✓
	Overload protection	✓	✓	✓	✓
	Safe voltage	✓	✓	✓	✓
	Fire alarm	✓	✓	✓	✓

Product Accessories

Crank Arms: Crank arms as an important force output component of swing door, is extremely important part of the door, KBB provide two types of crank arms. Respectively, slide type and scissors type.

Slide type: Suitable for limited door area.

Scissors type: Suitable for heavy-duty door.



Sensors and adjustment tools



Radar



Photocell



Hand sensor switch



Program controller

